

# Welcome



The *J*ackie Robinson Foundation  
2009 – 2010 Scholars' Handbook

EDUCATION IS OUR PITCH

### To The Jackie Robinson Foundation Scholar:



WHAT DOES IT MEAN TO BE A “Jackie Robinson Foundation Scholar”? I am sure every Scholar and alumnus would provide different responses when posed this question. While their diverse responses would undoubtedly reflect their own individual experiences as JRF Scholars, I am confident that their responses would share a very strong and prominent common vein. At the nucleus

of each response would be three easily identifiable core values that resound prominently with every JRF Scholar. The core values of achievement, leadership and service are the legacy of Rachel and Jackie Robinson; and these three values are at the heart of what we hope it ultimately means to be a Jackie Robinson Foundation Scholar.

Over the course of time, JRF Scholars develop their own sense of what it means to be a JRF Scholar. Until you arrive at that point, the following quotes around the three core values might serve as guideposts as you begin to chart your own course these next four years. **Achievement.** In any endeavor or pursuit, always strive to perform at your highest level, or in the words of Vince Lombardi, “While perfection is not attainable, if you chase perfection, you can catch excellence.” **Leadership.** President Obama recently said, “The future is not ours to fear, but ours to shape.” As leaders, you will shape destiny, not fall victim to it. **Service.** It is best defined in a quote by Jackie Robinson himself, “A life is not important except in the impact it has on other lives.”

At the start of the school year, I appreciate the abundance of communications that inundate today’s college students. However, there is pertinent information for both the new and returning Scholar throughout the Scholars’ Handbook; therefore, it is vital that each Scholar reserve time to carefully review the handbook.

I look forward to seeing everyone at Networking Weekend 2010, Friday, March 5 through Tuesday, March 9.



Damon Caldwell

Vice President, Chief Program Officer

#### October 19

- > **Deadline** to submit spring transcript, current resume, and update Scholar biography

#### November 9

- > Networking Weekend Registration available online

#### November 30

- > Rachel Robinson International Fellowship “RRIF” application available online

#### December 14

- > Scholar Special Recognition Awards applications available online

#### January 22

- > **Deadline** to submit fall transcript, spring course schedule, and update Scholar biography

#### February 1

- > **Deadline** to register for Networking Weekend
- > **Deadline** to submit “RRIF” and Special Recognition Awards applications

#### March 5-9

- > Annual Networking Weekend at the Grand Hyatt Hotel  
March 5 Scholars arrive  
March 8 JRF Annual Awards Dinner at the Waldorf=Astoria  
March 9 Scholars depart

#### March 15

- > Extra Innings Graduate Fellowship application available online

#### April 15

- > Jackie Robinson Day at Major League Baseball ballparks

#### April 30

- > **Deadline** to submit Extra Innings Graduate Fellowship applications

#### June 7

- > Summer Survey available online

#### June 15

- > **Deadline** to submit year-end transcript

#### June 25

- > **Deadline** to submit Summer Survey

#### July 1

- > Extra Innings Graduate Fellows announced

# About The Jackie Robinson Foundation



Jackie Robinson was an ardent supporter of the Civil Rights movement and the NAACP

## Jackie Robinson

Jackie Robinson was the first African-American baseball player to join the Major Leagues. Jackie (#42) played second base for the Brooklyn Dodgers from 1947 until his retirement in 1956. He helped the Dodgers win six pennants and one World Series. Named Rookie of the Year in 1947 and Most Valuable Player in 1949, he was elected to Baseball's Hall of Fame in 1962. Jackie's courage and determination paved the way for African-Americans to truly be on the same playing field and to succeed in the world of professional sports. He also paved the way for increased integration throughout society.

After his successful career in baseball, Jackie was a successful corporate executive, an outspoken leader on issues of civil and human rights, and a major figure in national politics. Jackie became Vice President of Chock full 'o Nuts in 1957 and later founded the Freedom National Bank of Harlem. He was deeply concerned with the struggle for civil rights and traveled extensively to raise money for the NAACP. Jackie Robinson lived by the motto "A life is not important except in the impact it has on other lives." Tragically, Jackie Robinson died in 1972. He was 53 years old.

Since his death, Jackie Robinson has been honored in many ways. In 1996, Congress signed into law a bill authorizing the minting of U.S. tender bearing Jackie's image. In 1997, 50 years following his historic entry into Major League Baseball, his number 42 was retired in perpetuity throughout baseball—the only player to be so honored. And in 2005 Jackie Robinson became only the fourth athlete in our nation's history to be awarded the Congressional Gold Medal, Congress' highest expression of national appreciation for distinguished achievements and contributions.

Today, Jackie Robinson lives on through the Foundation that bears his name, keeping his legacy alive while continuing his commitment to social justice.

## The Jackie Robinson Foundation Mission

The Jackie Robinson Foundation (JRF) is a public, not-for-profit, national organization founded in 1973 as a vehicle to perpetuate the memory of Jackie Robinson and his heroic achievements. It provides college and graduate school scholarships as well as leadership development opportunities for disadvantaged students of color with strong capabilities but limited financial resources. The Foundation is distinctive for the depth of its mentoring program, which results in a nearly 100% graduation rate among its student constituents. The Foundation also strives to ensure that Jackie Robinson's commitment to social justice will be carried forth in the lives of these young people as they assume leadership roles throughout society.

- > Over \$43 million in total program support of which over \$21 million is scholarship awards distributed to deserving students.
- > 1,400 students have participated in the program and received scholarships.
- > JRF Scholars maintain a 97% graduation rate, more than double the national average for minority students.
- > JRF Scholars are awarded up to \$7,500 in financial assistance per year for four years.

## 2009 – 2010 Academic Year

- > \$4 million provided in scholarship assistance and program support, almost \$2 million in direct scholarship aid
- > 248 JRF Scholars and Fellows (233 JRF Scholars, 15 Extra Innings Fellows)
- > Scholars and Fellows are enrolled at 94 colleges and universities. Scholars represent 31 States and the District of Columbia
- > 95 corporations, foundations and individuals currently support the Foundation's Education and Leadership Development Program.

Jackie Robinson, Hall of Fame baseball player.



# The History of The Jackie Robinson Foundation



Rachel Robinson receives first JRF sponsorship check from Ralph E. Ward of Chesebrough-Ponds

36 years ago, and one year after the untimely death of Jackie Robinson, a bereaved group of family and friends embarked on a mission to fulfill the dream of Rachel Robinson. With few means but much enthusiasm and drive, Rachel, her daughter Sharon and son David, her brother Charles T. Williams and friends Martin Edelman and Franklin Williams formed the Jackie Robinson Foundation. The tightly-knit group collectively agreed that the Foundation would “serve as an advocate for youth with the greatest need,” and would provide educational opportunities, mentoring and leadership development to promising college-bound students in need of financial assistance. Rachel, the Robinson children and Martin Edelman remain JRF board members today.

2

**1973** Rachel Robinson honors her husband’s memory by establishing the Jackie Robinson Foundation following his death in October 1972. In May, Chesebrough-Pond’s becomes JRF’s first corporate sponsor.

**1975** JRF becomes the sole beneficiary of “An Afternoon of Jazz” concert. The concert, began in 1963 as a way to raise bail money for jailed civil-rights activists.

**1978** Jerry Lewis becomes the Foundation’s first President and CEO. Debora Young, the first JRF Scholar, graduates from Boston College; Rachel Robinson is on hand to present Debora’s degree.

**1979** JRF hosts its first independent Awards Dinner. Robie Awards, the Foundation’s highest tribute to an extraordinary individual who has devoted a lifetime to the promotion of social justice and human dignity, are presented to Arthur Ashe and Ralph Ward. JRF opens its office on Court Street in Brooklyn, sharing space with the Jackie Robinson Development Corporation.

**1984** Elaine Weddington, the first graduate of JRF’s Sports Management Program, graduates from St. John’s University. She goes on to become the first female assistant general manager of a Major League Baseball team.

**1986** Betty Phillips Adams becomes JRF’s second president. During her tenure, alumni begin to play a more active role in the Foundation.

**1991** JRF Alumni are formally assigned to scholarship selection committees. John Skipper, the first alumni contributor, is appointed to the Board of Directors.

**1996** President of the National League, Leonard S. Coleman, Jr., is appointed Chairman of the Board of Directors.

**1997** The nation celebrates the 50th anniversary of Jackie Robinson’s historic entry into baseball. JRF launches a \$12 million endowment campaign with a \$1 million gift from Major League Baseball. The first endowed scholarship is named for Ennis Cosby.

**1998** Steven Brown becomes the Foundation’s third president. During his first year, 215 scholars were matriculating at 71 colleges and universities across the country.

**2001** The Starr Foundation gives two grants totaling \$1.7 million. It was the largest single gift received by JRF at that time and allowed the Foundation to substantially increase the number of scholars it served.

**2003** JRF achieves two significant milestones: The 100th Scholar sponsored by first supporter, Unilever (nee Chesebrough-Pond’s) is selected. JRF passes the \$10 million mark in scholarship aid.

**2004** Della Britton Baeza becomes JRF’s fourth President and Chief Executive Officer. She initiates a strategic plan for the future of JRF; working to expand its mission, donor base, technological capabilities, and number of Scholars.

**2006** JRF launches the “Extra Innings” program with matching funds provided by The Windmill Foundation. The program provides financial support to JRF Scholars who want to pursue graduate degrees.

**2007** JRF announces the Rachel Robinson International Fellowship or “RRIIF,” a global initiative to give Scholars the opportunity to travel abroad for community service, to intern or to study. JRF relocates to the state-of-the-art offices in the SoHo district of Manhattan.

**2008** JRF celebrates its 35th Anniversary.

**2009** Celebration of Jackie Robinson’s 90th birthday. JRF announces plans for the Jackie Robinson Museum with NIKE, the Yawkey Foundation, the New York Mets, Citi, and the New York Yankees as early supporters.

Artists rendering of the Jackie Robinson Museum slated to open in 2010.



## Scholar Conduct

JRF Scholars are expected to conduct themselves as mature and responsible members of both the JRF Family and of their university communities even though this standard of conduct reflects higher expectations than may be prevalent outside the JRF Family. JRF Scholars should take pride in the legacy of Rachel and Jackie Robinson and in the reputation of the Foundation; they appreciate the leadership development programs offered; and they acknowledge benefitting from the wealth of experience found among the Foundation's alumni and many associations. At the core of the Rachel and Jackie Robinson legacy are *Achievement, Leadership, and Service*. These three values are at the heart of what it means to be a JRF Scholar.



Academic Excellence and Community Service are at the heart of what it means to be a JRF Scholar. Scholars are required to participate in community service as part of their scholarship.

## Disciplinary Action

**PROBATION** A Scholar may be placed on probation for poor academic performance or behavior deemed unacceptable of a JRF Scholar. Scholars will be notified by letter of the reasons as well as the terms and conditions of probation. Scholars placed on probation are required to check in regularly with a member of the ELDP staff. Scholars on probation will continue to receive scholarship funds and may, upon approval, participate in official JRF events. Scholars who serve more than two consecutive academic terms on probation will automatically be placed on suspended status.

**SUSPENSION** A Scholar will be suspended for failure to meet the terms and conditions of probation, for not being enrolled as a full-time student in a four-year, accredited and approved institution or for being on probation for more than two consecutive academic terms. Scholars will be notified by letter of the reasons for and the terms and conditions of suspension. A suspended Scholar will not receive scholarship funds and may NOT participate in official JRF events. A suspended Scholar must submit to and have approved by JRF an *Academic Plan*. Before being re-instated, a suspended Scholar must also submit a modified application to JRF. Scholars reinstated will automatically be placed on probation for at least one academic term.

**TERMINATION** A Scholar can be immediately terminated for egregious conduct unbecoming of a JRF Scholar and for failure to meet the terms and conditions of probation or suspension. Scholars will be notified by letter of their termination, with the reasons supporting the termination explicitly provided. A Scholar under suspension for more than two consecutive years will automatically be terminated.

## Terms of Acceptance

As a Jackie Robinson Foundation Scholar, I will:

1. Endeavor to complete my undergraduate education within four consecutive years;
2. Maintain a strong academic standing as defined by my college or university;
3. Notify JRF immediately when I declare or change my major or course of study;
4. Notify JRF immediately if I plan to withdraw, transfer, study abroad or anticipate any interruption in my academic schedule;
5. Notify JRF if there are any changes to my home or school address, telephone and cell numbers, as well as e-mail addresses;
6. Each semester, submit to JRF my official transcript from the prior semester, update my Scholar's biography and provide my course schedule for the current semester;
7. Submit to JRF my current resume at the beginning of each fall semester;
8. Participate in all local and/or regional activities hosted by JRF, including the annual Scholars' Networking Weekend held in New York City during the spring of each year;
9. Notify JRF staff no less than 48 hours before a scheduled event, presentation or ceremony if I have a conflict. I understand that I may only be officially excused of my obligation by a JRF staff member;
10. Read Jackie Robinson's autobiography "I Never Had It Made;"
11. Consider summer employment with my scholarship sponsor before accepting other offers; and
12. Notify JRF immediately if there are any anticipated delays in my graduation schedule.

# Education and Leadership Development Program

First supported by a grant from Unilever (formerly Chesebrough-Ponds) in 1973, the Jackie Robinson Foundation today provides scholarship awards for four years to outstanding high school graduates who plan to earn a baccalaureate degree from an approved and accredited institution of higher education. Since its inception, JRF has attracted the support of thousands of companies, philanthropic institutions and individuals. As a result of our efforts, increasing numbers of students are able to attend colleges and universities of their choice where they are poised to develop their academic skills and leadership talents.



Judson Robins, JRF Scholar & Auburn University Freshman at Networking Weekend 2009

## Selection of JRF Scholars

Jackie Robinson Foundation Scholars are selected from the recommendations of regional selection committees from eight specific geographical regions. The regions are Central, Mid-Atlantic, Midwestern, New England, Northeastern, Southeastern, Southwestern and Western. The selection criteria used by the business, community and academic leaders who serve on these committees include: academic achievement, community service, leadership potential and financial need. After the Scholars are selected, committee members serve as mentors to the students and as liaisons to the colleges and universities where Scholars are enrolled. Selection committees host at least two annual events: a summer welcome reception for the newly selected Scholars and a holiday reception for alumni and Scholars.

## Internships and Professional Development

JRF staff and corporate partners assist Scholars with summer internship placement and permanent employment, offering valuable career development opportunities. The JRF staff works diligently with Scholars to identify appropriate internships and to secure summer and semester positions. Further, JRF Scholars also benefit from ongoing career counseling and assistance with locating full-time positions upon graduation. JRF sponsors are encouraged to extend permanent employment to any graduating Scholar or Alumni that fit with the organization.

## Public Service

JRF Scholars are required to participate in community service as part of their scholarship. Each Scholar must document their service activity through reports submitted annually to JRF which detail the organization where the Scholar worked, a description of the population, and the number of persons served. Through these efforts, JRF Scholars impact others and gain valuable skills and experiences in the process. Whether it is starting a non-profit to provide college preparatory training for low-income students, building houses in Third World regions, or reading to local children, JRF Scholars are ambassadors of Jackie's philosophy that, "A life is not important except in its impact on other lives."

## Rachel Robinson International Fellowship

The Rachel Robinson International Fellowship Program or "RRIF" was established in 2007 to promote and support international and study abroad opportunities for JRF Scholars. Fellows are selected on the basis of their leadership potential, academic excellence and commitment to community or national development. Scholars may use the fellowship for a variety of initiatives, such as additional financial support for a study abroad program, a volunteer or philanthropic effort, or in conjunction with an approved internship for a third party.

## Extra Innings Graduate Fellowship

JRF officially launched the Extra Innings Fellowship Program in May of 2006. This exciting program offers fellowships exclusively to selected JRF Scholars who desire to attend graduate school. The awards vary according to need but can be up to \$10,000 per year for one to two years.

4

## Program Components

### Networking Weekend

Each March, Jackie Robinson Foundation Scholars travel to New York City for four days of leadership development workshops, career exploration seminars, meetings with key public and private sector leaders, cultural and recreational outings and practical life skill training on subjects such as business etiquette and personal financial management. As part of the weekend, Scholars meet with their sponsors during special luncheons. Scholars also discuss their future goals and challenges in "family sessions" led by experienced facilitators. Equally important is the time JRF Scholars spend networking with one another and inspiring each other with stories of their own personal challenges, public service endeavors and other experiences. Networking Weekend culminates with JRF Scholars attending the Jackie Robinson Foundation's Annual Awards Dinner at the world-renowned Waldorf=Astoria Hotel. Networking Weekend 2010 will be held at the Grand Hyatt Hotel in New York City on March 5-9.

### Mentors

Selection committee members, corporate sponsors, community leaders and JRF staff act as mentors. Foundation Alumni also provide guidance to current JRF Scholars. These mentors assist Scholars in a wide variety of needs such as academic guidance, career planning and internship placement.

# Education and Leadership Development Program Staff

The ELDP staff is available to meet all JRF-related needs and requests of Scholars and serves as the main point of Scholar contact for all JRF information, events and opportunities. The staff is comprised of five professionals ready to serve and meet the needs of the Scholars. Even with their specific duties and responsibilities listed below, all ELDP staff members are available to assist Scholars with any questions, concerns or problems.

## Damon Caldwell

*Vice President.* Responsible for the overall strategic direction, program development, logistics planning and responsiveness of the department. Oversees the entire application process from submission to selection. In conjunction with JRF staff, determines department calendar, policies and establishes theme and schedule for Networking Weekend. dcaldwell@jackierobinson.org | Ext. 327

## Damian Travier

*Assistant Director.* Serves as the contact person for all internships and job postings, working closely with the sponsors, Scholars and JRF alumni to match opportunities. He also manages the application process for the Rachel Robinson International Fellowship, Extra Innings program and Special Recognition Awards. dtravier@jackierobinson.org | Ext. 328

## Daniel McNeal

*Assistant Director.* Is the point person for all Scholar communications from weekly updates to surveys. Manages Networking Weekend registration and maintains statistical data on Scholars and programs. Arranges Scholar participation at JRF events. dmcneal@jackierobinson.org | Ext. 329

## Le-Ann Peterkin

*Associate.* Handles the general administrative coordination and specific administrative tasks for the department. Maintains Scholar and alumni databases. Serves as hotel contact for Networking Weekend. lpeterkin@jackierobinson.org | Ext. 307

## Sheila Sykes

*Associate.* Accurately maintains record of Scholar performance and document submittals that govern the disbursement and tracking of scholarship checks. Ensures that all Scholars files are current and secure. ssykes@jackierobinson.org | Ext. 309



ABOVE Pulitzer Prize-winning, syndicated columnist Eugene Robinson

BELOW Emmy Award-winning MSNBC guest host, Alison Stewart joined Eugene Robinson in addressing JRF Scholars during Networking Weekend 2009.



Following are responses to some Frequently Asked Questions.

## Funds Disbursement

Scholarship funds are distributed each semester after a Scholar has submitted the required documents. Checks will be mailed directly to the Scholars unless otherwise notified. After the initial award check during the fall of each Scholar's freshman year, scholarship payments will be made only upon receipt of each previous semester's official transcript and any additional required documents. Half of each scholar's annual scholarships funds will be distributed each semester.

## Website

The official website for JRF is [www.jackierobinson.org](http://www.jackierobinson.org). Elements of the website were created with JRF Scholars in mind. A digital space as been created where only Scholars can access important JRF opportunities and information. The Alumni & Scholars area is secured. The username and password are sent with Scholars' scholarship checks. The Foundation has a Facebook page under "Jackie Robinson."

## Term of Scholarship

Scholarships are granted on a four-year term. Scholars planning to enroll in a 5-year academic program must notify the ELDP staff of their plans before the start of their sophomore year so that payment schedules can be adjusted accordingly.

## Networking Weekend (NWW)

The 2010 dates for NWW are March 5-9 at the Grand Hyatt Hotel in New York City. Scholars should plan to arrive by 5:00 PM EST on Friday, March 5 and depart on Tuesday, March 9. Transportation and lodging expenses will be paid for by JRF. In addition, each Scholar will receive a stipend of \$100 to be used during NWW.

## Contact Information

One Hudson Square, 75 Varick Street, 2nd Floor  
New York, NY 10013-1917  
Toll-free Scholars' Hotline 800-886-1573  
Telephone 212-290-8600 | FAX 212-290-8081  
[www.jackierobinson.org](http://www.jackierobinson.org)



# Special Recognition Awards



Danielle Coppock (Temple University '08) receives check for the 2009 Ralph E. Ward Achievement Award from Rachel Robinson (left) and Della Britton Baeza (right)

Jackie Robinson Foundation Scholars across the country are not only excelling in the classroom but affecting significant change and positively impacting the lives of others in their communities. As ambassadors of Jackie Robinson's philosophy, "A life is not important except in its impact on other lives." JRF Scholars touch thousands of lives each year through their community service. Each year, the Foundation presents the following awards to Scholars with particularly prodigious records of academic achievement and civic engagement. The awards are presented annually and all eligible Scholars are encouraged to apply.

## Spike Lee Youth Motivation Award

**Eligibility: All Scholars**    \$2,500

This award was established in 1995 to recognize the matriculating Scholar who performed the most outstanding community service during the preceding calendar year. The award is presented during the Scholars' Networking Weekend. All Scholars are encouraged to apply. The service initiative or project must be innovative and practical and should enable an individual or organization to solve a social, economic, governmental or legal problem within the community and/or to improve the status of the population served.

6

## The Unilever Legacy of Leadership Award

**Eligibility: Juniors Only**    \$10,000

The award was created to honor a JRF Scholar in his/her junior year who, through exemplary leadership, has made a positive impact on society at large. The award celebrates those who have found, created or seized opportunities to act responsibly for a better world, elevated the quality of community life and fostered compassion and tolerance toward all people. Established in 2003, the award can be used towards tuition, a charity of choice or for any other purpose deemed worthy by the recipient. In addition, the Scholar is offered candidacy for a domestic internship at Unilever.

Rayshon Payton (Oklahoma City University '10), 2009 Nike Prize awardee with Darryl Jones, General Manager, Nike East



Ebenezer Asare (Harvard University '11), winner of the 2009 Spike Lee Youth Motivation Award



Charles Fyffe (University of California Berkeley '10), recipient of the 2009 Unilever Legacy of Leadership Award



## The Nike Prize

**Eligibility: All Scholars**    \$1,000

Tennis great, humanitarian and historian, Arthur Ashe gave us three simple but inspiring sentences regarding service. "Start where you are. Use what you have. Do what you can." In recognition of sport and its power to affect change, this award celebrates the impact an athlete and sport can have on society. Created in 2008, the NIKE Prize grants \$1,000 annually to the JRF scholar athlete who exemplifies through his or her actions, the ways in which commitment, advocacy, and innovation can unite to challenge a community to change.

## Ralph E. Ward Achievement Award

**Eligibility: Graduating Scholars**    \$10,000

The Ralph E. Ward Achievement Award recognizes the graduating Scholar with the highest cumulative grade point average. Mr. Ward, the former chairman of Chesebrough-Ponds' USA (now Unilever) was instrumental in initiating corporate support of the Foundation's scholarship program in 1973. His interest in the success of JRF Scholars continued after his retirement from Chesebrough-Ponds. Mr. Ward was concerned about the financial adjustment Scholars make after completing undergraduate school. To ease that adjustment, Mr. Ward made a personal pledge to fund an award to be presented at the close of each academic year. Established with the class of 1989, the honor may be used in any way the winner chooses. The winner meets for an annual luncheon with former recipients and Mr. Ward.

# Class of 2013 Scholar Profiles



## Jarret Bryan

HOMETOWN Brooklyn, New York  
COLLEGE Brown University  
MAJOR Biology



## Shakinah Douglas

HOMETOWN Riverside, California  
COLLEGE UCLA  
MAJOR Pre-Law



## Erika Butler

HOMETOWN Upper Marlboro, Maryland  
COLLEGE Harvard University  
MAJOR English



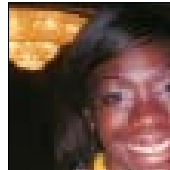
## Adrienne Edwards

HOMETOWN St. Albans, New York  
COLLEGE University of Pennsylvania  
MAJOR Economics



## Darrell Byrd

HOMETOWN Stone Mountain, Georgia  
COLLEGE Brandeis University  
MAJOR Pre-Medicine



## Bianca Eugene

HOMETOWN North Lauderdale, Florida  
COLLEGE Emory University  
MAJOR Biology or Biomedical Engineering



## Aerialle Crawford

HOMETOWN Mullins, South Carolina  
COLLEGE University of South Carolina  
MAJOR Business



## Jonae Felton

HOMETOWN Fayetteville, Georgia  
COLLEGE Tuskegee University  
MAJOR Electrical Engineering



## Linnetta De La Cruz

HOMETOWN New York, New York  
COLLEGE Stony Brook University  
MAJOR Liberal Arts



## Chad Foster

HOMETOWN Chicago, Illinois  
COLLEGE Morehouse College  
MAJOR Business Administration-Marketing



## Kayla Dias

HOMETOWN Boston, Massachusetts  
COLLEGE University of Connecticut  
MAJOR Sociology



## Dominique Grasty

HOMETOWN Colwyn, Pennsylvania  
COLLEGE Spelman College  
MAJOR Pre-Med



## Asia Dorsey

HOMETOWN Denver, Colorado  
COLLEGE New York University  
MAJOR Environmental Science



## Allison Green

HOMETOWN Chino Hills, California  
COLLEGE UCLA  
MAJOR Psychology/Journalism

# Class of 2013 Scholar Profiles



**Keron Greene**  
HOMETOWN Lancaster, California  
COLLEGE UCLA  
MAJOR Electrical Engineering



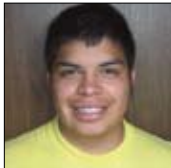
**Taylor Mason**  
HOMETOWN Long Beach, California  
COLLEGE UCLA  
MAJOR History and Sociology



**Petra Greenidge**  
HOMETOWN Sarasota, Florida  
COLLEGE Washington University in St. Louis  
MAJOR Pre-Med



**Mykel Matthews**  
HOMETOWN Chicago, Illinois  
COLLEGE University of Pennsylvania  
MAJOR Nursing



**Eleazar Gutierrez**  
HOMETOWN Edinburg, Texas  
COLLEGE Michigan State University  
MAJOR Computer Engineering



**Malik Miller**  
HOMETOWN Norwalk, Connecticut  
COLLEGE Massachusetts Institute of Technology  
MAJOR Mechanical Engineering



**Khyara Harris**  
HOMETOWN Cincinnati, Ohio  
COLLEGE University of Toledo  
MAJOR Broadcast Journalism



**Olevia Mitchell**  
HOMETOWN Inglewood, California  
COLLEGE Syracuse University  
MAJOR Architecture



**Jonathan Ho**  
HOMETOWN San Jose, California  
COLLEGE University of Pennsylvania  
MAJOR Economics/Business



**Simon-Noel Ndely**  
HOMETOWN Brooklyn Park, Minnesota  
COLLEGE University of Minnesota  
MAJOR Pre-Med



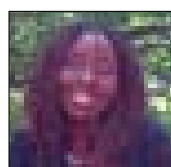
**Thomas LeNoir**  
HOMETOWN Chicago, Illinois  
COLLEGE Marquette University  
MAJOR Business Entrepreneurship



**Charles Nwaogu**  
HOMETOWN Houston, Texas  
COLLEGE University of Texas at Austin  
MAJOR Government



**Monique Malone**  
HOMETOWN Flower Mound, Texas  
COLLEGE Ohio State University  
MAJOR Communications



**Victoria Okuneye**  
HOMETOWN Brooklyn Park, Minnesota  
COLLEGE Massachusetts Institute of Technology  
MAJOR Physics & Cognitive Neuroscience



**Ileana Orellana**

HOMETOWN Frederick, Maryland  
COLLEGE University of Maryland-College Park  
MAJOR Engineering



**Yvonne Spratley**

HOMETOWN Disputanta, Virginia  
COLLEGE University of North Carolina at Chapel Hill  
MAJOR Speech Pathology & Audiology



**Daniel Parham**

HOMETOWN Broken Arrow, Oklahoma  
COLLEGE Villanova University  
MAJOR Business, Computer Science or Engineering



**McKinley Stephens**

HOMETOWN St. Louis, Missouri  
COLLEGE University of Pennsylvania  
MAJOR Applied Science



**Danielle Pingue**

HOMETOWN Worcester, Massachusetts  
COLLEGE Princeton University  
MAJOR Political Science



**Robin Tipps**

HOMETOWN Ardmore, Oklahoma  
COLLEGE University of Oklahoma  
MAJOR History



**Howard Ray III**

HOMETOWN Appomattox, Virginia  
COLLEGE Duke University  
MAJOR Biomedical Engineering



**Paulina Villanueva**

HOMETOWN Riverside, California  
COLLEGE UCLA  
MAJOR International Affairs



**Kevin Rowsey**

HOMETOWN Durham, North Carolina  
COLLEGE University of North Carolina at Chapel Hill  
MAJOR Business/Chinese



**Cedric White**

HOMETOWN Randolph, Massachusetts  
COLLEGE Bowdoin College  
MAJOR Chemistry



**Christopher Russell**

HOMETOWN Yeadon, Pennsylvania  
COLLEGE University of Pennsylvania  
MAJOR Undecided



**Danielle Wilkins**

HOMETOWN Brooklyn, New York  
COLLEGE Spelman College  
MAJOR Broadcast Journalism



**Christopher Scott**

HOMETOWN Morris, Minnesota  
COLLEGE University of Minnesota  
MAJOR Pre-Law and/or Sports Management

# Class of 2013 Scholar Statistics

## SCHOLARSHIP APPLICATIONS



## CLASS OF 2013

### Gender

Females 23 | Males 18 |

### Ethnicity

African American 35 | Native American 1 | Asian/South Asian 1 | Hispanic/Latino 4 |

### Average Scores

SAT with writing 1901 | SAT without writing 1328 | ACT 26 | GPA 3.9 |

### Type of High School

Private 8 | Charter 1 | Public 32 |

### High School Location

Urban 14 | Suburban 20 | Rural 7 |

### Top 5 Majors

Medicine/Biology | Engineering | Business/Economics | Communications | History/Law |

### Households

Single-parent 19 | Dual-parent 22 |

### Top 3 Most Influential People

Barack Obama | Martin Luther King Jr. | Oprah Winfrey |

## 2009 – 2010 JRF Scholars by State

Alabama		2
Arizona		1
California	7	43
Colorado	1	3
Connecticut	1	10
District of Columbia		1
Florida	2	7
Georgia	2	15
Illinois	3	20
Kentucky		1
Louisiana		1
Maine		1
Maryland	2	7
Massachusetts	3	11
Michigan		3
Minnesota	3	17
Missouri	1	4
Nevada		1
New Jersey		6
New York	4	25
North Carolina	1	5
North Dakota		1
Ohio	1	6
Oklahoma	2	4
Pennsylvania	2	5
Rhode Island		1
South Carolina	1	4
South Dakota		1
Texas	3	15
Virginia	2	9
Washington		1
Wisconsin		2

**Class 2013** | 41  
**All Scholars** | 233

**AMHERST COLLEGE**  
**Cara Dorsey**  
San Francisco, California  
Sophomore  
Business  
MLB/San Francisco Giants

**AUBURN UNIVERSITY**  
**Judson Robinson**  
Fayetteville, Georgia  
Sophomore  
Civil Engineering  
GE Foundation

**BAYLOR UNIVERSITY**  
**Prince Adotama**  
Houston, Texas  
Junior  
Biology  
Houston Astros

**MaKenzie Hodge**  
Longview, Texas  
Junior  
Biochemistry  
Texas Rangers

**BOSTON COLLEGE**  
**Titciana Barros**  
Dorchester, Massachusetts  
Junior  
Economics  
The Windmill Foundation

**BOSTON UNIVERSITY**  
**Icee Etheridge**  
Riverdale, Illinois  
Junior  
Classical Civilization  
Chicago White Sox Charities

**Carol Guerrero**  
Peabody, Massachusetts  
Sophomore  
Undecided  
MLB/Boston Red Sox

**Shakeela Najjar**  
New Bedford, Massachusetts  
Sophomore  
Biology  
Boston Red Sox

**BOWDOIN COLLEGE**  
**Cedric White**  
Randolph, Massachusetts  
Freshman  
Chemistry  
Major League Baseball

**BRANDEIS UNIVERSITY**  
**Darrell Byrd**  
Stone Mountain, Georgia  
Freshman  
Pre-Med  
GE Foundation

**BROWN UNIVERSITY**  
**Jarret Bryan**  
Brooklyn, New York  
Freshman  
Biology  
Unilever

**Raymond Jackson**  
Norfolk, Virginia  
Sophomore  
Undecided  
Unilever

**CARLETON COLLEGE**  
**Pa Lor**  
Minneapolis, Minnesota  
Junior  
Political Science/International Relations  
GE Foundation

**Raymond Nelson**  
Cleveland, Ohio  
Sophomore  
Political Science  
MLB/Cleveland Indians

**CARNEGIE MELLON UNIVERSITY**  
**Ashley Hill**  
Cleveland Heights, Ohio  
Senior  
Decision Science  
Nestlé

**CHEYNEY UNIVERSITY OF PENNSYLVANIA**  
**Dantawn Nicholson**  
Chicago, Illinois  
Senior  
Human Biology, Health & Society  
GE Foundation

**CITY COLLEGE OF NEW YORK**  
**Melissa Jackson**  
Elmont, New York  
Senior  
Biomedical Education  
New York Yankees

**Hector Velez**  
Central Islip, New York  
Junior  
Biomedical/Pre-Med  
Mo Vaughn

**COLUMBIA UNIVERSITY**  
**Albert Jimenez**  
New York, New York  
Senior  
Computer Engineering  
Emerson

**CORNELL UNIVERSITY**  
**David Bahena**  
San Diego, California  
Junior  
Hotel Administration  
JRF/Cornell University

**Camila Bedolla**  
Healdsburg, California  
Senior  
Hotel Administration  
JRF/Cornell University

**Sidra Bonner**  
Denver, Colorado  
Sophomore  
Government  
Colorado Rockies

**Jordan Brown**  
Inglewood, California  
Senior  
Applied Economics and Management  
JRF/Cornell University

**Jamal Cole**  
Sicklerville, New Jersey  
Junior  
Hotel Administration  
JRF/Cornell University

**Tiffany Fidler**  
Hopewell Junction, New York  
Senior  
Applied Economics and Management  
JRF/Cornell University

**Chinomso Nnodum**  
Bridgeport, Connecticut  
Senior  
Human Ecology  
Ennis Cosby

**Samuel Ramsey**  
Temple Hills, Maryland  
Junior  
Entomology  
JRF/Cornell University

**Bryce Robertson**  
Mechanicsville, Virginia  
Senior  
Government  
JRF/Cornell University

**Choumika Simonis**  
St. Albans, New York  
Junior  
Biology  
JRF/Cornell University

**DARTMOUTH COLLEGE**  
**Kayasha Lyons**  
Brooklyn, New York  
Sophomore  
Undecided  
MLB/New York Yankees

**Sir Norman Melancon**  
Parker, Texas  
Sophomore  
Biology and History  
MLB/Texas Rangers

# JRF Scholars by College

## DEVRY UNIVERSITY

**Rayana Lewis**  
Compton, California  
Senior  
Business Administration  
[The Jackie Robinson Foundation](#)

**Kym Pressley**  
Hempstead, New York  
Senior  
Game and Simulation Programming  
[Electronic Arts, Inc.](#)

## DUKE UNIVERSITY

**Adedayo Aderibigbe**  
Melrose, Massachusetts  
Senior  
International Comparative Studies  
[Rachel Robinson](#)

**Esosa Osa**  
Clayton, Ohio  
Sophomore  
Political Science and Philosophy  
[MLB/Cincinnati Reds](#)

**Howard Ray**  
Appomattox, Virginia  
Freshman  
Biomedical Engineering  
[Unilever](#)

**Kevin Tolson**  
Senior  
Baltimore, Maryland  
Political Science  
[Royce Clayton](#)

## EDINBORO UNIVERSITY IN PENNSYLVANIA

**Elizabeth Meade**  
Waldoboro, Maine  
Sophomore  
Secondary Education  
[The Windmill Foundation](#)

## ELON UNIVERSITY

**Nneka Enurah**  
Junior  
Marietta, Georgia  
Corporate Communications  
[GE Foundation](#)

## EMORY UNIVERSITY

**Bianca Eugene**  
North Lauderdale, Florida  
Freshman  
Biology or Biomedical Sciences  
[The Coca-Cola Foundation](#)

**Laura Riley**  
College Park, Georgia  
Junior  
Sociology  
[Unilever](#)

## FLORIDA A&M UNIVERSITY

**Symone Everett-Day**  
Milwaukee, Wisconsin  
Sophomore  
Nursing  
[MLB/Milwaukee Brewers](#)

## FRANCIS MARION UNIVERSITY

**Kendal Hughes**  
Marion, South Carolina  
Junior  
English  
[Unilever](#)

## GEORGIA INSTITUTE OF TECHNOLOGY

**Kyle Rhoden**  
Plantation, Florida  
Sophomore  
Biomedical Engineering  
[MLB/Florida Marlins](#)

## HAMPTON UNIVERSITY

**Jamie Blair**  
Kansas City, Missouri  
Sophomore  
Business Administration  
[MLB/Kansas City Royals](#)

**Pamela Champ**  
Richmond, Virginia  
Junior  
Business Administration  
[Sheila C. Johnson Foundation](#)

**Rachel Evans**  
Chicago, Illinois  
Junior  
Business Administration  
[Deloitte.](#)

## Lauren Gilliard

Chicago, Illinois  
Senior  
Finance  
[GE Foundation](#)

## Bryce Ratliff

Brooklyn Center, Minnesota  
Junior  
Biology  
[Unilever](#)

## HARVARD UNIVERSITY

**Alexandra Almore**  
Midlothian, Virginia  
Sophomore  
Biomedical Engineering  
[GE Foundation](#)

**Ebenezer Asare**  
North Providence, Rhode Island  
Junior  
Chemical & Physical Biology  
[Unilever](#)

**Erika Butler**  
Upper Marlboro, Maryland  
Freshman  
English  
[Yawkey Foundation](#)

**Rebecca Gilmore**  
Kansas City, Missouri  
Sophomore  
Government  
[Kansas City Royals](#)

**Fatima Loeliger**  
Davis, California  
Junior  
Human Evolutionary Biology  
[Rachel Robinson](#)

**Desmond Mitchell**  
Marietta, Georgia  
Senior  
Psychology  
[General Atlantic LLC](#)

**HOWARD UNIVERSITY**  
**Briana Evans**  
Atlanta, Georgia  
Junior  
English  
[Jackie David Robinson](#)

**Lia Harris**  
Norwalk, Connecticut  
Junior  
Biology  
[Martin L. Edelman, Esq.](#)

**Christina Joseph**  
Canton, Georgia  
Sophomore  
Business Management  
[Unilever](#)

**Makeda Njoroge**  
New Bedford, Massachusetts  
Sophomore  
Psychology  
[Unilever](#)

**Amanda Patterson**  
Chicago, Illinois  
Sophomore  
Biology  
[The Rocking Chair Foundation](#)

## INDIANA UNIVERSITY

**Julian Clarkson**  
Woodbury, Minnesota  
Sophomore  
Woodwind Performance  
[CMG Worldwide](#)

## LEHMAN COLLEGE

**Ayesha Lewis**  
Laurelton, New York  
Senior  
History  
[New York Mets](#)

## LOUISIANA STATE UNIVERSITY

**Ivan Greenlee**  
Slidell, Louisiana  
Sophomore  
Civil Engineering  
[GE Foundation](#)

## MARQUETTE UNIVERSITY

**Thomas LeNoir**  
Chicago, Illinois  
Freshman  
Business Entrepreneurship  
[Unilever](#)

**Marlo Rodriguez**  
St. Paul, Minnesota  
Sophomore  
Chemistry and Economics  
[Ameriprise Financial, Inc.](#)

## MASSACHUSETTS INSTITUTE OF TECHNOLOGY

**Kathy Bui**  
Westminster, California  
Junior  
Materials Science Engineering  
and Physics  
[Alcoa Foundation](#)

**Grafton Daniels**  
Landover, Maryland  
Junior  
Electrical Engineering and Computer  
Science  
[Alcoa Foundation](#)

**Ijeoma Emeagwali**  
Baltimore, Maryland  
Sophomore  
Computer Engineering  
[MLB/Baltimore Orioles](#)

**Christopher Francis**  
Bronx, New York  
Sophomore  
Civil Engineering  
[Unilever](#)

**Malik Miller**  
Norwalk, Connecticut  
Freshman  
Mechanical Engineering  
[GE Foundation](#)

**Victoria Okuneye**  
Brooklyn Park, Minnesota  
Freshman  
Physics and Cognitive Neuroscience  
[United Health](#)

**Brendon Sullivan**  
Salem, Massachusetts  
Junior  
Physics  
[Unilever](#)

## All Scholars

Freshman 41 | Sophomore 82 | Junior 55 | Senior 55 | Extra Innings 15 | TOTAL 248

### MICHIGAN STATE UNIVERSITY

**Eleazar Gutierrez**  
Edinburg, Texas  
Freshman  
Computer Engineering  
The Coca-Cola Foundation

### MISSOURI UNIVERSITY OF SCIENCE & TECHNOLOGY

**Curterris Golden**  
Chicago, Illinois  
Sophomore  
Engineering  
MLB/Chicago White Sox

### MOREHOUSE COLLEGE

**Akil Foluke**  
Brooklyn Park, Minnesota  
Senior  
Chemical Engineering and Chemistry  
The Starr Foundation

### Chad Foster

Chicago, Illinois  
Freshman  
Business Administration–Marketing  
The Goldman Sachs Group

### Corey Nash

Compton, California  
Senior  
Sociology  
The Windmill Foundation

### William Payne

Louisville, Kentucky  
Sophomore  
Business Administration  
Unilever

### Joseph Wilson

Philadelphia, Pennsylvania  
Junior  
Finance  
Deloitte.

### NEW YORK UNIVERSITY

**Asia Dorsey**  
Denver, Colorado  
Freshman  
Environmental Science  
Unilever

### Earl Roach

Piscataway, New Jersey  
Sophomore  
Business Management  
Merrill Lynch & Co. Foundation, Inc.

### Sandra Sanchez

Brooklyn, New York  
Senior  
Psychology  
JRF/New York University

### NORTHERN ILLINOIS UNIVERSITY

**Troy White**  
Chicago, Illinois  
Sophomore  
Business Administration  
MLB/Chicago Cubs

### NORTHWESTERN UNIVERSITY

**Jasmyne McDonald**  
Berkeley, Illinois  
Sophomore  
Communications  
Scripps Networks

### OSBERLIN COLLEGE

**Chiemela Ubagharaji**  
Chicago, Illinois  
Sophomore  
Undecided  
Unilever

### OCCIDENTAL COLLEGE

**Ashly Burch**  
Glendale, Arizona  
Sophomore  
Theatre  
MLB/Arizona Diamondbacks

### OHIO STATE UNIVERSITY

**Zachary Graham**  
Alpharetta, Georgia  
Senior  
Communications  
GE Foundation

### Monique Malone

Flower Mound, Texas  
Freshman  
Communications  
Xerox Foundation

### OHIO WESLEYAN UNIVERSITY

**Jaime Fuentes**  
Massillon, Ohio  
Senior  
Economics and International Studies  
JRF/Ohio Wesleyan University

### OKLAHOMA CITY UNIVERSITY

**Rayshon Payton**  
Oklahoma City, Oklahoma  
Senior  
Political Science  
The Bill Dickey Scholarship Association

### PEPPERDINE UNIVERSITY

**Michele Weaver**  
Centennial, Colorado  
Sophomore  
Theatre  
MLB/Colorado Rockies

### POMONA COLLEGE

**Jahmil Eady**  
New York, New York  
Junior  
Media Studies  
Bloomberg

### PRINCETON UNIVERSITY

**Hector Moreno**  
Whitehall, Pennsylvania  
Junior  
Chemical Engineering  
GE Foundation

### Danielle Pingue

Worcester, Massachusetts  
Freshman  
Political Science  
Newark Bears

### ROCHESTER INSTITUTE OF TECHNOLOGY

**Ryan Lopez**  
Unionville, Connecticut  
Sophomore  
Computer Science  
Unilever

### RUTGERS—STATE UNIVERSITY OF NEW JERSEY

**William Alston**  
Englewood, New Jersey  
Senior  
Meteorology  
BMO Capital Markets

### SETON HALL UNIVERSITY

**Ryan Parker**  
Midlothian, Virginia  
Sophomore  
Sports Management  
Unilever

### SMITH COLLEGE

**Dominique Jones**  
Chapel Hill, North Carolina  
Senior  
Biochemistry  
Ron Burkle

### SPELMAN COLLEGE

**Dominique Grasty**  
Colwyn, Pennsylvania  
Freshman  
Biology/Pre-Med  
The Coca-Cola Foundation

### Briana Peppers

Saint Louis, Missouri  
Sophomore  
Biology  
MLB/St. Louis Cardinals

### KeLea Randall

St. Paul, Minnesota  
Senior  
International Studies and Spanish  
BMO Capital Markets

### Shayla Thomas

Douglas, Georgia  
Junior  
Biology  
BMO Capital Markets

### Jasmine Wheeler

San Diego, California  
Sophomore  
Psychology  
MLB/San Diego Padres

### Danielle Wilkins

Brooklyn, New York  
Freshman  
Broadcast Journalism  
Unilever

### Chelsea Williams

Raleigh, North Carolina  
Sophomore  
Economics  
Merrill Lynch & Co. Foundation, Inc.

### STANFORD UNIVERSITY

**Emefa Abotsi**  
Stone Mountain, Georgia  
Senior  
Psychology  
The Starr Foundation

### Leah Barnes

Evanston, Illinois  
Junior  
Political Science  
Sheila C. Johnson Foundation

### Lawrence Crosby

Raleigh, North Carolina  
Sophomore  
Undecided  
Ira D. Hall Family Scholarship

### Michael Duarte

San Francisco, California  
Sophomore  
Undecided  
San Francisco Giants

### Alexandra Hunter

Los Angeles, California  
Sophomore  
Sociology & African American Studies  
MLB/Los Angeles Dodgers

### Sharada Jambulapati

Whigham, Georgia  
Sophomore  
International Relations  
Unilever

### Samuel Sinyangwe

Orlando, Florida  
Sophomore  
Political Science  
Unilever

# JRF Scholars by College

## STEVENSON UNIVERSITY

**Ashley Waith**  
Baltimore, Maryland  
Sophomore  
Business Administration  
ARAMARK

## STONY BROOK UNIVERSITY

**Linnetta De La Cruz**  
New York, New York  
Freshman  
Liberal Arts  
Morgan Stanley Foundation

## SUNY BINGHAMTON

**Nicole Velez-Green**  
Peekskill, New York  
Sophomore  
Undecided  
7-11/Anheuser Busch

## SWARTHMORE COLLEGE

**Stephanie Rodriguez**  
Paterson, New Jersey  
Sophomore  
History  
Novartis Pharmaceuticals Corporation

## SYRACUSE UNIVERSITY

**Imani Folkes**  
Franklin Park, New York  
Junior  
Public Relations  
William F. Doescher/Newhouse

## Olevia Mitchell

Inglewood, California  
Freshman  
Architecture  
The Coca-Cola Foundation

## TEMPLE UNIVERSITY

**Brittney Vail**  
Washington, District of Columbia  
Junior  
Legal Studies  
Deloitte.

## TEXAS A&M UNIVERSITY

**Cristina Gandia**  
Dallas, Texas  
Senior  
Finance  
Merrill Lynch & Co. Foundation, Inc.

## James Sawyer

Pflugerville, Texas  
Sophomore  
Nuclear Engineering  
GE Foundation

## TRINITY COLLEGE

**Elan Jones**  
Maple Glen, Pennsylvania  
Junior  
Neuroscience  
BMO Capital Markets

## Channon Miller

Hartford, Connecticut  
Junior  
American Studies  
Unilever

## TUFTS UNIVERSITY

**Falilat Akinleye**  
Queens Village, New York  
Junior  
Biology  
Bloomingdale's

## Krystle Shakespeare

Yonkers, New York  
Junior  
Child Development  
Fisher Brothers Foundation

## TULANE UNIVERSITY

**Otasha Grant**  
Houston, Texas  
Senior  
English  
GE Foundation

## TUSKEGEE UNIVERSITY

**Jonae Felton**  
Fayetteville, Georgia  
Freshman  
Electrical Engineering  
GE Foundation

## Aaron Ragsdale

Chicago, Illinois  
Junior  
Electrical Engineering  
American Electric Power

## UNIVERSITY OF ALABAMA

**AT BIRMINGHAM**  
**Sharnetria Wright**  
Salem, Alabama  
Sophomore  
Biomedical Engineering  
Unilever

## UNIVERSITY OF ALABAMA

**AT TUSCALOOSA**  
**Jesmond Fair**  
Opelika, Alabama  
Senior  
Psychology  
Gerry & Franca Mulligan Foundation

## UNIVERSITY OF CALIFORNIA,

**BERKELEY**  
**Charles Fyffe**  
Los Angeles, California  
Senior  
Leadership and Social Change  
The Moody's Foundation

## David Hampton

Carson, California  
Senior  
Integrative Biology  
City National Bank

## UNIVERSITY OF CALIFORNIA, LOS ANGELES

**Rachel Aladdin**  
Altadena, California  
Senior  
World Arts and Cultures  
JRF/UCLA/Team 42

## Bijan Beglari

Pacific Palisades, California  
Sophomore  
Computer Science  
Air Products & Chemicals, Inc.

## Bianca Carrion

Sylmar, California  
Junior  
Physiological Sciences  
Joe Black/Team 42

## Ashley De Vance

Long Beach, California  
Sophomore  
Political Science & Sociology  
JRF/UCLA/Team 42

## Shakinah Douglas

Riverside, California  
Freshman  
Pre-Law  
JRF/UCLA/Team 42

## Robin Egbuniwe

Gardena, California  
Junior  
Orthopedics/Human Physiology  
JRF/UCLA/Team 42

## Ebreon Farris

Inglewood, California  
Junior  
Sociology  
Daron Campbell/Team 42

## Feven Girmay

Las Vegas, Nevada  
Sophomore  
Civil Engineering  
JRF/UCLA/Team 42

## Leslie Grant

San Diego, California  
Sophomore  
Biology  
JRF/UCLA/Team 42

## Allison Green

Chino Hills, California  
Freshman  
Psychology/Journalism  
JRF/UCLA/Team 42

## Keron Greene

Lancaster, California  
Freshman  
Electrical Engineering  
Air Products & Chemicals, Inc.

## Karen Horton

Compton, California  
Junior  
Biological Sciences  
JRF/UCLA/Team 42

## Brieana Johnson

Senior  
Compton, California  
Women's Studies  
JRF/UCLA/Team 42

## Jonathan Maner

Los Angeles, California  
Junior  
Biophysics  
JRF/UCLA/Team 42

## Taylor Mason

Long Beach, California  
Freshman  
History/Sociology  
JRF/UCLA/Team 42

## Corey Matthews

Los Angeles, California  
Senior  
Psychology  
JRF/UCLA/Team 42

## Pierre Mays

San Pablo, California  
Junior  
Business Administration  
JRF/UCLA/Team 42

## Nicolette Robinson

Los Angeles, California  
Senior  
Theatre  
JRF/UCLA/Team 42

## Paulina Villanueva

Riverside, California  
Freshman  
International Affairs  
JRF/UCLA/Team 42

## Marques Watson

Los Angeles, California  
Sophomore  
Political Science  
JRF/UCLA/Team 42

## Ashley Williams

Los Angeles, California  
Sophomore  
Sociology  
JRF/UCLA/Team 42

## Justin Williams

Pittsburg, California  
Senior  
Communications  
JRF/UCLA/Team 42

## Top 5 Majors

Engineering

Medicine

Business/Economics

Psychology

Political Science

### UNIVERSITY OF CALIFORNIA, SAN DIEGO

#### Hanna Nakamura

Oakland, California  
Sophomore  
Economics  
MLB/Oakland Athletics

### UNIVERSITY OF CENTRAL OKLAHOMA

#### Lavelle Compton

Oklahoma City, Oklahoma  
Sophomore  
Psychology  
Unilever

### UNIVERSITY OF CHICAGO

#### Artis Lewis

Chicago, Illinois  
Sophomore  
Biology  
Bernard Winograd

### UNIVERSITY OF CINCINNATI

#### Brittany Jones

Cincinnati, Ohio  
Sophomore  
Computer Engineering  
Cincinnati Reds

### UNIVERSITY OF CONNECTICUT

#### Kareem Ayodeji

Norwalk, Connecticut  
Senior  
Sociology  
The Moody's Foundation

#### Courtney Buchanan

New Haven, Connecticut  
Junior  
Psychology and Human Development  
and Family Studies  
Marie-Josée Kravis

#### Kayla Dias

Boston, Massachusetts  
Freshman  
Sociology  
Yawkey Foundation

#### Davin English

Waterford, Connecticut  
Sophomore  
Computer Science  
GE Foundation

#### Chelsea Lane

Windsor, Connecticut  
Senior  
Biology  
Harris Rosen

### UNIVERSITY OF ILLINOIS AT URBANA-CHAMPAIGN

#### Taylor Moore

Chicago, Illinois  
Junior  
Jazz Performance  
Sheila C. Johnson Foundation

#### Ashley Rouse

Sauk Village, Illinois  
Senior  
Communication  
Jackie Robinson Foundation Alumni  
Association

### UNIVERSITY OF MARYLAND, COLLEGE PARK

#### Ileana Orellana

Frederick, Maryland  
Freshman  
Engineering  
Air Products & Chemicals, Inc.

### UNIVERSITY OF MASSACHUSETTS AMHERST

#### Natalia Crisostomo

Boston, Massachusetts  
Junior  
Sociology  
John F. Kennedy, Jr.

### UNIVERSITY OF MICHIGAN- ANN ARBOR

#### Lauren Fladger

Pontiac, Michigan  
Senior  
Chemical Engineering  
GE Foundation

#### David Holliday

Mesquite, Texas  
Senior  
Psychology  
The Dworman Family Scholarship  
Fund

#### Dwayne Riley

Romulus, Michigan  
Junior  
Movement Science  
Alcoa Foundation

#### Amber Spears

Detroit, Michigan  
Sophomore  
Engineering  
MLB/Detroit Tigers

### UNIVERSITY OF MINNESOTA

#### Dena Baker

St. Paul, Minnesota  
Senior  
Psychology  
JRF/UMN/Team 42

#### Rachelle Cordova

Fargo, North Dakota  
Senior  
English Literature  
JRF/UMN/Wells Fargo

#### Marcus Cox

Union Grove, Wisconsin  
Junior  
Advertising  
JRF/UMN/Wells Fargo

#### Lelna Desta

Spring Lake Park, Minnesota  
Sophomore  
Biomedical Engineering  
JRF/UMN/Wells Fargo

#### Ma-Eyongerie Frambo

New Hope, Minnesota  
Sophomore  
Dance  
MLB/Minnesota Twins

#### Andrea Glover

Minneapolis, Minnesota  
Senior  
Philosophy  
JRF/UMN/Team 42

#### John Hardy

Minneapolis, Minnesota  
Senior  
Marketing and Entrepreneurial  
Management  
JRF/UMN/Wells Fargo

#### Lorna Her Many Horses

Rosebud, South Dakota  
Sophomore  
Music Education  
JRF/UMN/Team 42

#### Simon-Noel Ndely

Brooklyn Park, Minnesota  
Freshman  
Pre-Med  
JRF/UMN/Wells Fargo

#### Ayantu Omer

Cottage Grove, Minnesota  
Sophomore  
Pharmacy  
JRF/UMN/Wells Fargo

#### Christopher Scott

Morris, Minnesota  
Freshman  
Pre-Law and/or Sports Management  
JRF/UMN/Wells Fargo

#### Charles West

Chicago, Illinois  
Junior  
Graphic Design  
JRF/UMN/Wells Fargo

### UNIVERSITY OF MISSOURI- COLUMBIA

#### Lauren Foreman

Chicago, Illinois  
Senior  
Convergence Journalism  
Stephen Ross

### UNIVERSITY OF NORTH CAROLINA- CHAPEL HILL

#### Kevin Rowsey

Durham, North Carolina  
Freshman  
Business/Chinese  
Morgan Stanley Foundation

#### Yvonne Spratley

Disputanta, Virginia  
Freshman  
Speech Pathology & Audiology  
The Coca-Cola Foundation

#### Michael Tabb

Marietta, Georgia  
Sophomore  
Chemistry  
MLB/Atlanta Braves

### UNIVERSITY OF OKLAHOMA

#### Ryan Edwards

Sherman, Texas  
Junior  
Biomedical Engineering  
Winstead/Wachovia

#### Robin Tipps

Ardmore, Oklahoma  
Freshman  
History  
Morgan Stanley Foundation

### UNIVERSITY OF PENNSYLVANIA

#### Akeem Bailey

Far Rockaway, New York  
Sophomore  
Business Finance  
MLB/New York Mets

#### Adrienne Edwards

Saint Albans, New York  
Freshman  
Economics  
Unilever/Betty Phillips Adams

#### Jonathan Ho

San Jose, California  
Freshman  
Economics/Business  
Morgan Stanley Foundation

#### Dean Johnson

Coral Springs, Florida  
Senior  
Finance  
John Blondel

#### Daniella Jones

Jamaica, New York  
Senior  
Communications  
Dow Jones and Company, Inc.

# JRF Scholars by College

**Marcus Lawrence**  
Altadena, California  
Senior  
Real Estate  
JPMorgan Chase

**Mykel Matthews**  
Chicago, Illinois  
Freshman  
Nursing and Health Care Management  
The Windmill Foundation

**Christopher Russell**  
Yeadon, Pennsylvania  
Freshman  
Undecided  
The Goldman Sachs Group

**McKinley Stephens**  
St. Louis, Missouri  
Freshman  
Medicine  
Brown Shoe Company

**David Thomas**  
Smyrna, Georgia  
Sophomore  
Business  
Philadelphia Phillies

**Lauren Usher**  
Chicago, Illinois  
Senior  
Economics and Political Science  
Arthur Strugatz

**Ashley Wilson**  
Brooklyn, New York  
Sophomore  
Undecided  
MLB/Philadelphia Phillies

**UNIVERSITY OF PITTSBURGH**  
**Anna Nwokelo**  
Rochester, New York  
Sophomore  
Biology  
MLB/Pittsburgh Pirates

**UNIVERSITY OF ROCHESTER**  
**Iliana Garcia**  
Rochester, New York  
Sophomore  
English  
JRF/University of Rochester

**UNIVERSITY OF SOUTH CAROLINA**  
**Aerialle Crawford**  
Mullins, South Carolina  
Freshman  
Business  
Morgan Stanley Foundation

**Sharae' Moultrie**  
Conway, South Carolina  
Sophomore  
Finance  
Merrill Lynch & Co. Foundation, Inc.

**UNIVERSITY OF SOUTH FLORIDA**  
**Ivana Simpson**  
Coconut Creek, Florida  
Sophomore  
Microbiology  
MLB/Tampa Bay Rays

**UNIVERSITY OF SOUTHERN CALIFORNIA**  
**Jasmine Davis**  
Seattle, Washington  
Sophomore  
Undecided  
MLB/Seattle Mariners

**Felecia Hunter**  
Long Beach, California  
Senior  
Political Science  
Skadden, Arps, Slates, Meagher & Flom, LLP

**Cymone Lonon**  
Long Beach, California  
Junior  
Mathematics  
GE Foundation

**Pierre Martin**  
Corona, California  
Junior  
Biological Sciences  
Branch Rickey

**Ochanya Ogah**  
Houston, Texas  
Sophomore  
International Relations  
MLB/Houston Astros

**Vina Vo**  
Garden Grove, California  
Sophomore  
Business Administration  
MLB/Los Angeles Angels of Anaheim

**UNIVERSITY OF ST. THOMAS**  
**Ashley Bailey**  
Brooklyn Center, Minnesota  
Sophomore  
Political Science  
Ameriprise Financial, Inc.

**UNIVERSITY OF TEXAS AT AUSTIN**  
**Angela Frost**  
Tyler, Texas  
Sophomore  
Business and Sport Management  
Delaware North Companies

**Charles Nwaogu**  
Houston, Texas  
Freshman  
Government  
New Era Cap Company

**James Salazar**  
Austin, Texas  
Sophomore  
Biomedical Engineering  
H-E-B/Round Rock Express

**UNIVERSITY OF TEXAS AT SAN ANTONIO**  
**Telisha Randle**  
Houston, Texas  
Junior  
Information Systems  
Deloitte.

**UNIVERSITY OF TOLEDO**  
**Khyara Harris**  
Cincinnati, Ohio  
Freshman  
Broadcast Journalism  
GE Foundation

**UNIVERSITY OF VIRGINIA**  
**Sarajane Davis**  
Charlottesville, Virginia  
Sophomore  
Psychology and African American Studies  
MLB/Toronto Blue Jays

**Brittany Williams**  
Port Chester, New York  
Senior  
Systems and Information Engineering  
Consolidated Edison of New York

**UNIVERSITY OF WISCONSIN-MADISON**  
**Ashley Blaine**  
Brooklyn Park, Minnesota  
Sophomore  
Nursing  
Michael & Catherine Meyer

**VILLANOVA UNIVERSITY**  
**Daniel Parham**  
Broken Arrow, Oklahoma  
Freshman  
Business, Computer Science or Engineering  
Unilever

**WASHINGTON UNIVERSITY IN ST. LOUIS**  
**Petra Greenidge**  
Sarasota, Florida  
Freshman  
Pre-Med  
Rays Baseball Foundation

**Richalle Smith**  
Raleigh, North Carolina  
Senior  
Anthropological Sciences  
Rachel Robinson

**WELLESLEY COLLEGE**  
**Conisha Cooper**  
Glen Ridge, New Jersey  
Sophomore  
Economics  
Mary Gordon

**WOFFORD COLLEGE**  
**Kariesha Drayton**  
Charleston, South Carolina  
Junior  
Business  
GE Foundation

**YALE UNIVERSITY**  
**Akpanoluo Etteh**  
Natick, Massachusetts  
Senior  
Psychology  
Turn 2 Foundation, Inc.

**Christian Eubank**  
Herndon, Virginia  
Sophomore  
Political Science  
MLB/Washington Nationals

**Mariam Hinds**  
Trumbull, Connecticut  
Junior  
Psychology  
GE Foundation

**Vanessa Obas**  
Palm Bay, Florida  
Junior  
Biology  
Unilever

**Joseph Porter**  
Staten Island, New York  
Junior  
Ethics, Politics and Economics  
Deloitte.

**Steven Reneau**  
Augusta, Georgia  
Senior  
Political Science  
Ambac Financial Group, Inc.

**Michael Walden**  
Seal Beach, California  
Sophomore  
Engineering  
Unilever

# The Jackie Robinson Foundation

## Officers

Rachel Robinson  
*Founder*  
Jackie Robinson Foundation  
Della Britton Baeza  
*President & CEO*  
Jackie Robinson Foundation  
Leonard S. Coleman, Jr.  
*Chairperson*  
Jackie Robinson Foundation  
Sharon Robinson  
*Vice-Chairperson*  
Major League Baseball  
Martin L. Edelman, Esq.  
*Secretary*  
Paul, Hastings, Janosfky & Walker, LLP  
Ira D. Hall  
*Treasurer*

## Board of Directors

Seth G. Abraham  
*Starship, SA*  
Darius Anderson  
*Platinum Advisors*  
John Blondel  
*The Goldman Sachs Group*  
A. David Brown  
*Urban Brands, Inc.*  
Roscoe C. Brown, Jr., Ph.D.  
*City University of New York*  
June Jackson Christmas, MD  
*New York, NY*  
William F. Doescher  
*The Doescher Group*  
Kenneth Fisher  
*Fisher Brothers*  
Steve Forbes  
*Forbes, Inc.*  
Michelle Gadsden-Williams  
*Novartis Pharmaceuticals Corporation*  
Gregg A. Gonsalves  
*Goldman Sachs Group*  
Joyce Hergenhan  
*Fairfield, CT*  
William A. Holland  
*Hilton Hotels Corporation*  
Terrance G. Jackson  
*Circulation Expert, Ltd.*  
Warren G. Jackson  
*Circulation Expert, Ltd.*  
Sheila C. Johnson  
*Shelia C. Johnson Foundation*  
Christopher Koch  
*New Era Cap Company*  
Michael E. Meyer, Esq.  
*DLA Piper US LLP*  
Joe L. Morgan  
*J.L. Morgan Enterprises, Inc.*  
Charles E. Morrison  
*UniWorld Group, Inc.*  
Ziad Ojakli  
*The Ford Motor Company*  
Peter O'Malley  
*Los Angeles, CA*  
Jose Rivera  
*UBS*  
David Robinson  
*UpCountry International Products*  
Stephen M. Ross  
*The Related Companies*  
Barry Salzberg  
*Deloitte*  
Norman Siegel, Esq.  
*New York, NY*  
John N. Skipper, Esq.  
*Consolidated Edison of New York*  
Ernest Steiner  
*Darien, CT*  
Jeffrey I. Sussman  
*Louis Dreyfus Property Group*  
Mark S. Weiner  
*Financial Innovations, Inc.*  
Terrie M. Williams  
*The Stay Strong Foundation*

## Staff

Della Britton Baeza  
*President & CEO*  
Damon Caldwell  
*Vice President & Chief Program Officer*  
Donna Cathey  
*Director of Sponsor Relations*  
Valerie Callender  
*Executive Assistant to the President*  
Ramona Gross  
*Office Assistant*  
La'Tonya F. Johnson  
*Vice President, Chief Operations Officer*  
Stephen Lynch  
*Development Manager*  
Daniel McNeal  
*Assistant Director of Educational Services*  
Le-Ann Peterkin  
*Education and Development Associate*  
Jai Phillips  
*Development Associate, Western Region*  
Barbara Sawyer  
*Operations Manager*  
Mireille Stephen  
*Operations Associate*  
Sheila Sykes  
*Program Associate*  
Damian Travier  
*Assistant Director of Leadership Development*  
Tammara Walker  
*Development Associate*  
Nichol Whiteman  
*Associate Vice President and Manager, Western Region*  
Valaida Wynn  
*Director, Events and Community Relations*

## Regional Selection Committees

### NORTHEASTERN

Clyde Tinnen (*Chair*)  
Jere Eaton (*Vice-Chair*)  
Marie Baskerville  
Roscoe Brown  
Tanya Curry-McMichael  
Brian Edelman  
Elizabeth Gil  
Hank Goldstein  
Hope Harley  
J'von Harris  
Derek Lane  
Byron Lewis  
Edward Livingston  
James Obi  
Betty Phillips Adams  
Danielle Robinson  
Danielle Smith  
Rodney Smith  
Annette Strickland  
Sobani Warner  
Natalie Webb  
Debbie Williams

### CENTRAL

Euclid Williamson (*Chair*)  
Rand Harlow (*Vice-Chair*)  
Regina Manley (*Vice-Chair*)  
Ronda Adams  
Joyce V. Brown  
Tina Carroll-Dugas  
Eva Chess  
Francis Davis  
LeKeshia Gage  
Ebony McGee  
Wayne Morgan

### MID-ATLANTIC

Kendra Gaither (*Chair*)  
Kathryn Clay  
Jermaine Cruz  
John Davis II  
Otis Ellis  
David Jones  
Angelia Neal

### MIDWESTERN

Sue W. Hancock (*Co-Chair*)  
Patrick Troup (*Co-Chair*)  
Keon Blasingame  
Clinton Hewitt  
David Maggitt  
Lakeesha Ransom  
Robyn Sims

### NEW ENGLAND & INTERNATIONAL

Mikel Sidberry (*Chair*)  
Roslyn Marshall (*Vice-Chair*)  
Ronald Ancrum  
Lynne Bannister  
Vivian Barringer  
Tchintcia Barros  
Edward Cook  
Brandy Cruthrid  
Gladys Gibbs  
Pamela Nunes

### SOUTHEASTERN

Mark Lee (*Chair*)  
Dwayne Marshall (*Vice-Chair*)  
Joe Arnette  
Anne Borders-Patterson  
Douglas Cooper  
De'Mont Davis  
Barbra Douglas  
Sherry Fields  
Luddy Ligon  
Marcus Polk  
Emma Roberson  
Marsha Sanabria  
Dolores Strawbridge

### SOUTHWESTERN

Tameka Selders (*Co-Chair*)  
Nakia Davis (*Co-Chair*)  
Yolanda Carroll  
Kevin Davis  
Christopher Jones  
Suewan Johnson  
Spencer Lightsy  
Tasha Philpot  
Troy D. Refuge  
Michael Selders  
Gabrielle Tyler

### WESTERN

William Holland (*Chair*)  
Daron Campbell (*Vice-Chair*)  
Mary Home (*Coordinator*)  
Lena Brown  
Robert Cambridge  
Michael Coulter  
Jo Ann Dawson  
Matthew Edelman  
Charles Meigs  
Kathy Robinson Young  
Keith Sinclair

## Western Region Advisory Committee

Kareem Abdul-Jabbar  
Amy Alcott  
Erikk Aldridge  
Darius Anderson\*  
Leroy D. Baca  
Ernie Banks  
Ryan Boyle  
Robert Cambridge  
Roy Campanella II  
Daron Campbell  
George Caplan  
Christopher Carey  
Al Downing  
Ann Meyers Drysdale  
Margaret Farnum  
Earl Gales  
Robert V. Graziano  
Paul Hudson  
William Holland\*  
Lou Johnson  
David G. Martin  
Richard Medor  
Richard Mendelson  
Daniel S. Mitrovich  
George Mitrovich  
Deborah Morales  
Michael E. Meyer, Esq.\*  
Joe L. Morgan\*  
Don Newcombe  
Peter O'Malley\*  
Keith Parker  
Pat Prescott  
Oz Scott  
Vin Scully  
Charles Todd  
Nicholas Weinstock

\*Board of Directors

**The Jackie Robinson Foundation**  
ONE HUDSON SQUARE | 75 VARICK STREET, 2ND FLOOR  
NEW YORK, NY 10013-1917

NON-PROFIT  
ORGANIZATION  
U.S. POSTAGE  
PAID  
NEW HAVEN, CT  
PERMIT NO. TBD

[www.jackierobinson.org](http://www.jackierobinson.org)

One Hudson Square, 75 Varick Street, 2nd Floor, New York, NY 10013-1917

T 212-290-8600 | F 212-290-8081

1999 Avenue of the Stars, 4th Floor, Los Angeles, CA 90067

T 310-595-3292 | F 310-595-3300